

# Remote Ultrasonic Monitor

Keep track of remote or hard-to-reach equipment with  
**Ultra-Tek GSM4G™ Remote Ultrasonic Monitor**

## Review the condition of remote equipment from a mobile phone

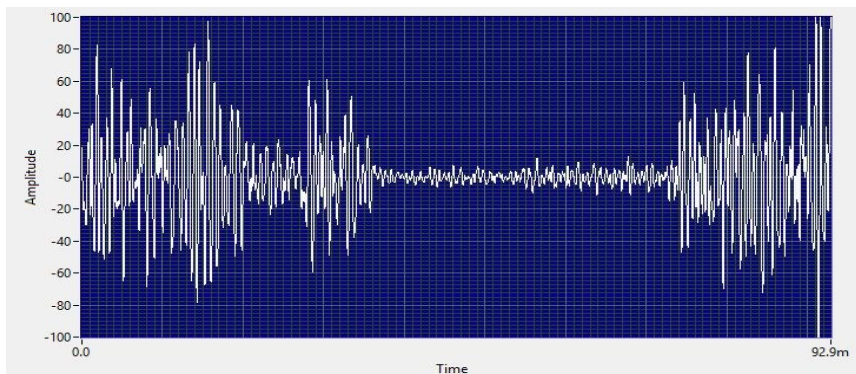
The **Ultra-Tek GSM4G™** unit will send an SMS to a linked mobile phone as soon as the equipment reaches a pre-determined trigger point.

The user can then dial back to the **GSM4G™** unit and view real time data on the equipment.

The signal can be live streamed and used for analysis in the **UE SPECTRALYZER™** Special Analysis software for diagnosis



The **Ultra-Tek GSM4G™** unit uses a standard phone sim card and a **UE Systems Ultra-Trak 750™** Ultrasound sensor providing 24/7 real time information. The trigger points can be remotely set and altered by sending an SMS instruction to the unit. The user can dial in at any time to see real time information on the performance of the equipment. Each unit is PIN protected and multiple phones can dial in to see live data, if PIN is included.



The **Ultra-Tek GSM4G™** unit can be permanently fixed to the equipment and can operate, using either **24VDC or 240 VAC** power.

A Mobile phone signal is needed and the system can use either a **4G or 3G signal**.

The unit is fixed in an **IP68 weather proof** container

**UE SPECTRALYZER™** Analysis Software for specialist analysis of the equipment  
(Example of a Time Series tab screen shot.)

The **Ultra-Tek GSM4G™** unit can be used for any of the following Ultrasound readings:

### Bearings:

- Lack of lubrication in bearings
- Micro damage in bearings
- Overloading of a bearing
- Failure of a bearing

### Steam Systems

- Steam trap condition

### Pumps:

- Cavitation in pumps
- Overloading in pumps
- Condition of pump barrels

### Valves:

- Passing Valves
- Isolations



## Specification

**Ultra-Tek GSM4G™** Remote Ultrasonic Monitor

**Application:** Remote monitoring of **Ultra-Trak 750™** interface

### Features:

- **UE Ultra-Trak 750™** Interface
- Automated SMS Monitoring
- Live Audio Monitoring
- Configuration via SMS
- Security (PIN)
- Weather proof housing

### Power Supply

#### Option 1 : 24V DC Version

- Input Voltage Range: 18-30VDC
- Input current: 900mA max

#### Option 2 : 240V AC Version

- Input Voltage Range: 85-305VAC (120-430VDC)
- Frequency: 47-440Hz

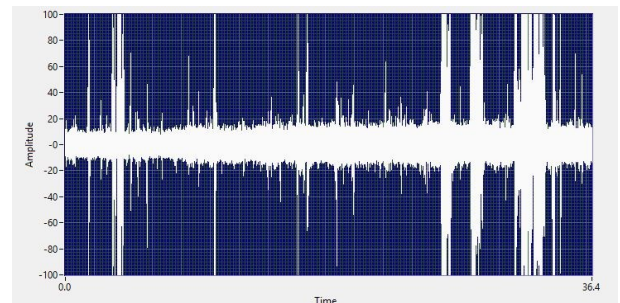
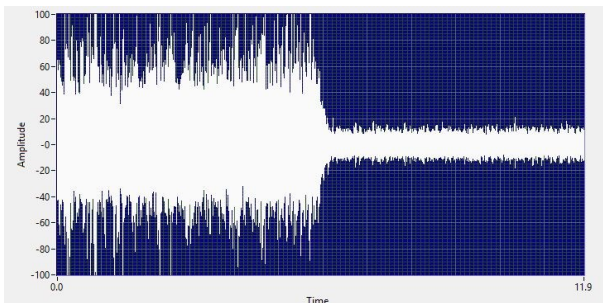
### Cellular Connectivity

AU Version

- 4G (LTE) B1/B2/B3/B4/B5/B7/B8/B28
- 3G (WCDMA) B1/B2/B5/B8
- 2G (GSM/EDGE) Quad-band

**SIM Socket** Mini-SIM 2FF

**IP Rating** IP68



### The Kit includes:

- **Ultra-Tek GSM4G™** Remote Ultrasonic Monitor
- **UE Systems Ultra Trak 750™** Ultrasonic sensor
- **Manual**
- **External Antenna**

### Ultra-Tek GSM4G™ Remote Ultrasonic Monitor

When remoteness, difficult access or Safety make it challenging to retrieve information from a test point, and there is no LAN or Wi-Fi available, the **Ultra-Tek GSM4G™** Mobile phone unit is the ideal answer. All you will need is mobile phone signal.



A: Unit 5 / 2-4 Maiella Street Stapylton QLD 4207

T : 0400 709 800

E: info@ultra-tek.com.au

W: www.ultra-tek.com.au